

Ceiling mount bracket

Description

This ceiling mount bracket is to be used when mounting LCD projectors to the ceiling.

Specifications

Vertical correction angle:	+5°, -20°
Horizontal slant correction angle:	±10°
Horizontal turn correction angle:	±5°
Dimensions (W x H x D):	164 x 313–393 x 179 mm (6-15/16" x 12-5/16"–15-15/32" x 7"-1/16")
Weight:	1.9 kg (4.2 lbs)

Weights and dimensions shown are approximate. Specifications subject to change without notice.

Parts

Attachment plate	1	Safety fitting	2
Projector mount bracket	1	Washer-fitted hexagonal bolts (M6 x 12)	
Adjuster pole A	1		19
Adjuster pole B	1	Washer-fitted screws (M4 x 8)	1
Angle adjuster A	1	Washer-fitted screws (M4 x 12)	3
Angle adjuster B	1		

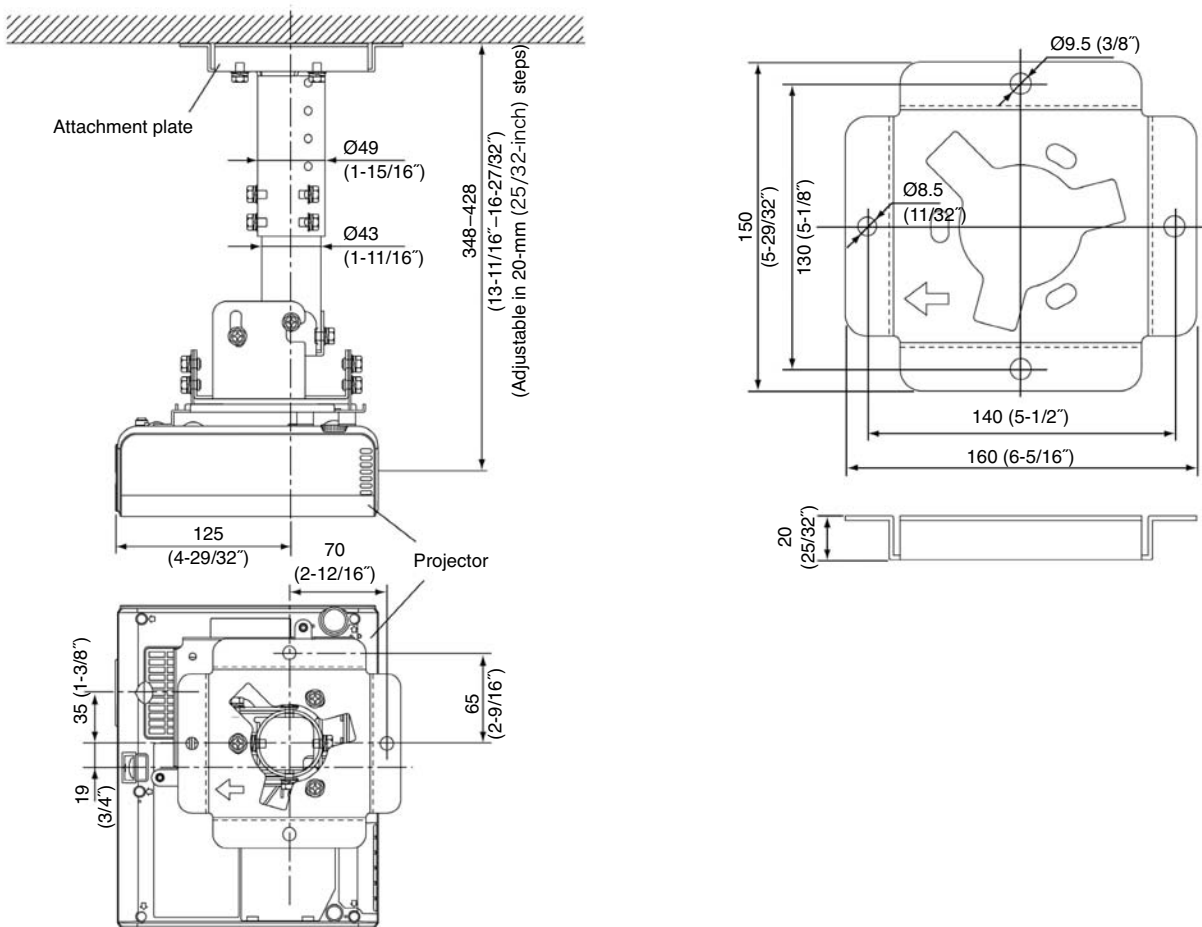
Caution:

Mounting should be done by a qualified technician. Make sure that the mounting (ceiling) area has sufficient strength. Read the enclosed mounting instructions thoroughly before starting.

Dimensions

Illustration shows the projector attached to the projector.

Attachment plate



unit: mm (inch)

Note: This illustration is not drawn to scale.